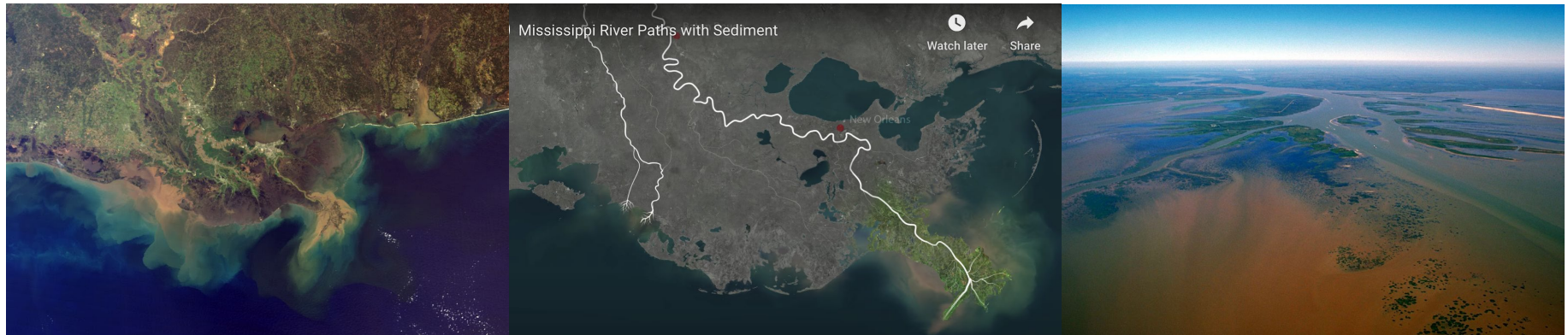


The Mississippi Delta

The Mississippi River is one of the longest rivers in America. Rain and melting snow from 31 states run off the land. This water goes into creeks and rivers. The water ultimately flows into the Mississippi River. Nearly half the land in the United States has creeks and rivers that flow into the Mississippi River. The water flows all the way to the Gulf of Mexico. It takes 3 months for a drop of water to flow from the start of the river to the gulf! The map shows the parts of the United States that have water that flows into the Mississippi River.



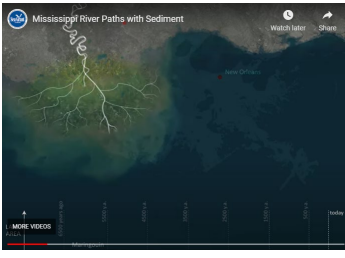
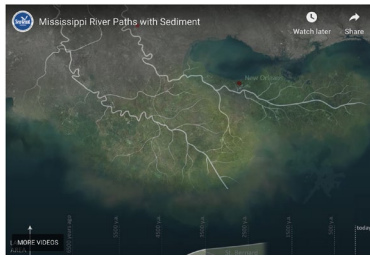
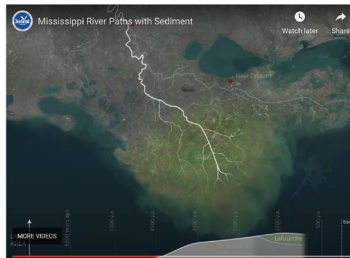

The Mississippi delta is the place where the river meets the ocean. The delta spans almost 3 million acres. It is the largest coastal wetlands in the United States. The delta wetlands are about 10% of the whole state of Louisiana! It is home to hundreds of kinds of birds, reptiles, mammals, and plants.



Images of the Mississippi delta from space and flying over it.

How does land change to form a delta?

PART A: Make observations and jot down wonderings while you watch the satellite-imagery animation from outer space showing the Mississippi delta forming over thousands of years.

View from outer space				
Date	5,000 years ago	3,000 years ago	1,000 years ago	Today
Your noticings and wonderings				

PART B: Look at the map of the delta from 2,000 years ago and today. Consider these questions:

- How did this happen?
- Where did the new land come from?



2,000 YEARS AGO



TODAY

Using words and pictures, draw your thinking about the questions above.

