

Earth's Changing Surface

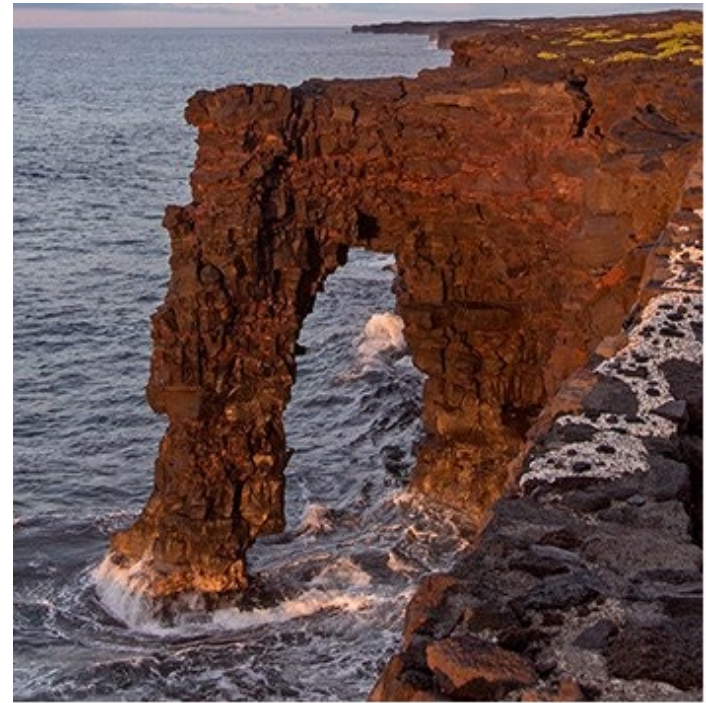
For each location, record your ideas and wonderings about what is *causing* these land changes.

	Cause	Effect
1.		Over time, a sea arch forms out of a sea cliff.
2.		Over time, sand dunes form between a windy, sandy area and a mountain range.
3.		Over time, mountains became shorter and rounder.



Image ©2020 TerraMetrics; map data ©2020

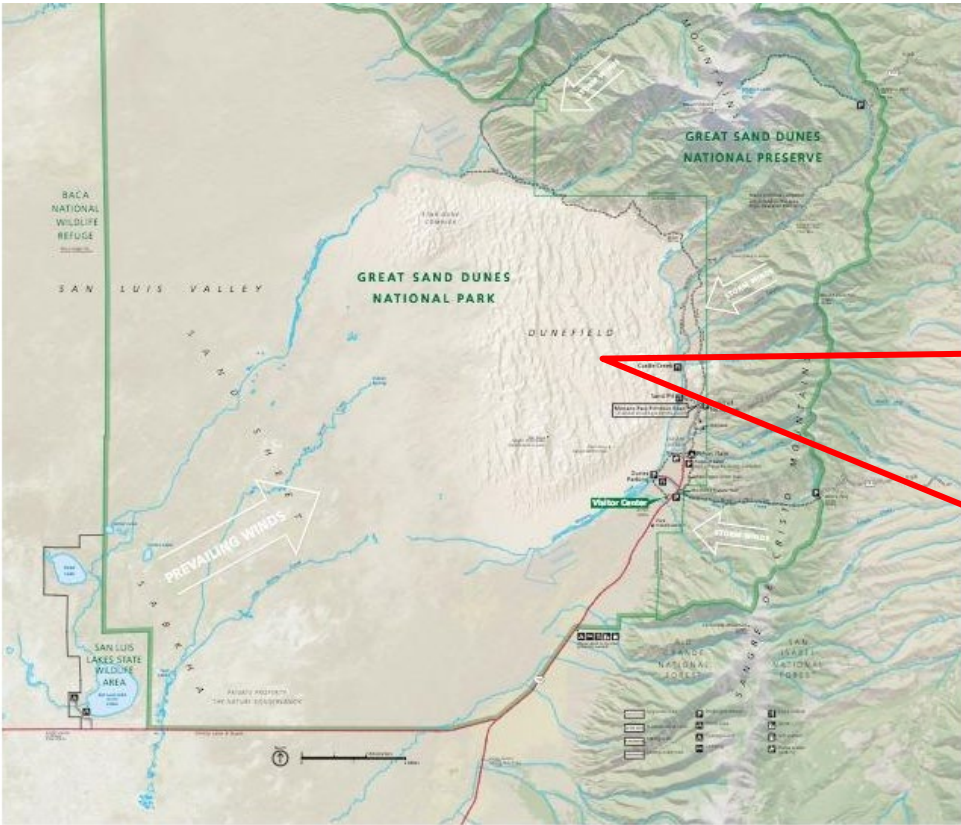
Over time, a **sea arch** forms out of a sea cliff.



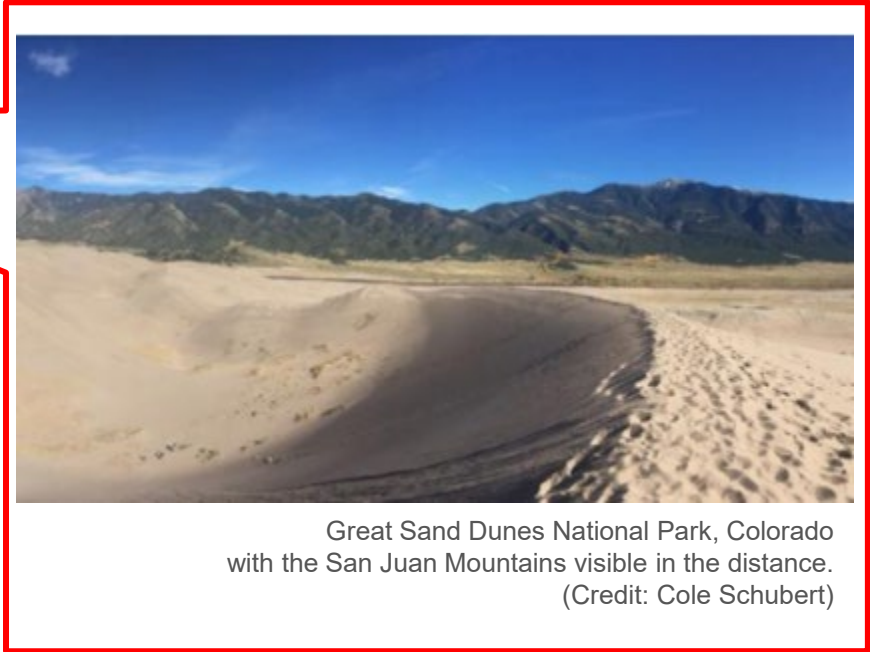
Hōlei Sea Arch (NPS Photo/J. Wei)

Location #1

Over time, **sand dunes** form between a windy, sandy area and a mountain range.



National Parks Service map of Great Sand Dunes National Park



Great Sand Dunes National Park, Colorado with the San Juan Mountains visible in the distance. (Credit: Cole Schubert)

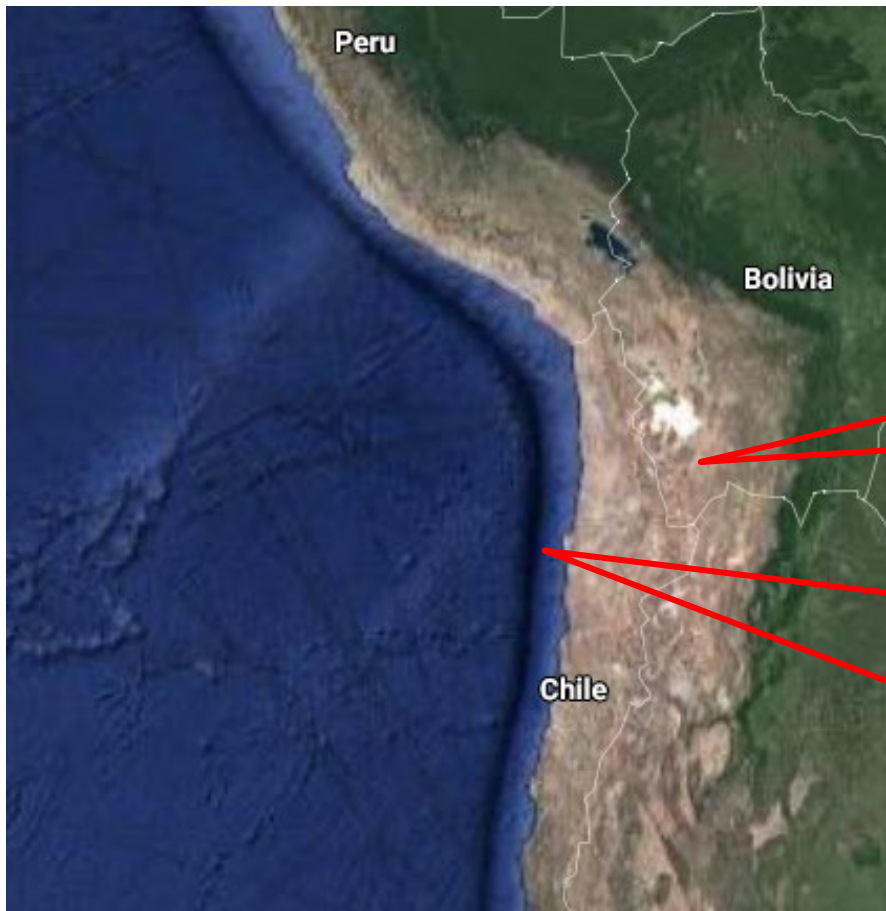
Over time, **mountains** became shorter and rounder.



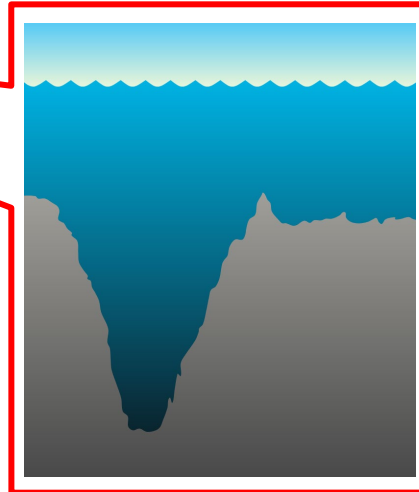
USGS topographic map



On the Appalachian Trail (NPS)



A **mountain range** becomes taller along the coast.



A deep **ocean trench** is found along the coast.

Image ©2020 NASA, TerraMetrics; map data ©2020 Google

Location #4

